

Geological Society Publishing House

Unit 7 Brassmill Enterprise Centre, Brassmill Lane, Bath, Somerset, BA1 3JN, U.K.

Tel: +44 (0)1225 44 50 46 • Fax: +44 (0)1225 44 28 36 • Email: subs@geolsoc.org.uk

The Geological Society of London, Registered Charity No. 210161 • VAT number GB 877 0147 09



Image: © Wayne Brittle

	Page
Annual subscriptions	
Lyell Collection Complete	2
Journal of the Geological Society	3
Quarterly Journal of Engineering Geology & Hydrogeology	3
Petroleum Geoscience	3
Geochemistry: Exploration Environment, Analysis	3
Proceedings of the Yorkshire Geological Society	4
Scottish Journal of Geology	4
Special Publications	4
Geoscientist	4
Online First / Accepted manuscripts	5
Online Archives	
Special Publications Archives	6
Journal of the Geological Society Archives	7
Contact us / Payment, online access and tax information	8
Book series information	10

2020 subscription rates

Subscriptions are available for *one calendar year (1st January to 31st December 2020)* at the rates listed.

Subscription rates are for single site access and apply to the geographic location of the end user.

Lyell Collection Complete † 2020 subscription			
<p>Lyell Collection Complete includes access to:</p> <p>Journals:</p> <ul style="list-style-type: none"> ➤ <i>Journal of the Geological Society</i> (1845-2020) ➤ <i>Quarterly Journal of Engineering Geology and Hydrogeology</i> (1967-2020) ➤ <i>Geochemistry: Exploration, Environment, Analysis</i> (2001-2020) ➤ <i>Petroleum Geoscience</i> (1995-2020) ➤ <i>Proceedings of the Yorkshire Geological Society</i> (1839-2020) ➤ <i>Scottish Journal of Geology</i> (1965-2020) ➤ <i>Journal of Micropalaeontology</i> online only (1982-2017) <p>Book series (more information on page 10):</p> <ul style="list-style-type: none"> ➤ Geological Society of London <i>Special Publications</i> (480+ volumes) Only available with a Complete subscription: ➤ Geological Society of London <i>Memoirs</i> (50 volumes) ➤ Geological Society of London <i>Engineering Geology Special Publications</i> (26 volumes) ➤ <i>Petroleum Geology Conference Proceedings</i> (4th, 5th, 6th, 7th and 8th conferences) <p>Historic content - only available with a Complete subscription:</p> <ul style="list-style-type: none"> ➤ <i>Transactions of the Geological Society</i> (1811-1845) ➤ <i>Transactions of the Edinburgh Geological Society</i> (1868-1963) ➤ <i>Transactions of the Geological Society of Glasgow</i> (1860-1963) 			
	<i>Online only</i>	<i>Online + print copies of 2020 Special Publications</i>	<i>Online + all 2020 print journals / books listed above</i>
UK end user	£5,577 +VAT *Saving: £665	£6,577 +VAT *Saving: £398	£6,971 +VAT *Saving: £832
European Union end user	£5,924 +VAT *Saving: £699	£6,924 +VAT *Saving: £463	£7,405 +VAT *Saving: £872
VAT rate**	20%	20%	20%
Non-EU Europe or Rest of World end user	£5,924 / US\$11,848 *Saving: £699 / US\$1,395	£6,924 / US\$13,848 *Saving: £463 / US\$923	£7,405 / US\$14,810 *Saving: £872 / US\$1,743
Online access	https://www.LyellCollection.org		



***Saving compared to subscribing to the 7 components of Lyell Collection Complete available as individual subscriptions.**



Subscription rates are for single site access and apply to the geographic location of the end user. Please contact one of the regional agents listed on page 8 if you require a multi-site or global access license.

Journal of the Geological Society

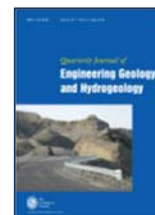
Volume 177, 6 issues



	<i>Online only</i>	<i>Online + print</i>
UK end user	£1,286 + VAT	£1,608 + VAT
European Union end user	£1,428 + VAT	£1,785 + VAT
VAT rate**	20%	20%
Non-EU Europe or Rest of World end user	£1,428 / US\$2,856	£1,785 / US\$3,570
Online access	Back to 1845 https://jgs.lyellcollection.org/	
Schedule	January, March, May, July, September, November	
Online ISSN: 2041-479X, Print ISSN 0016-7649		

Quarterly Journal of Engineering Geology and Hydrogeology

Volume 53, 4 issues



	<i>Online only</i>	<i>Online + Print</i>
UK end user	£596 + VAT	£746 + VAT
European Union end user	£667 + VAT	£833 + VAT
VAT rate**	20%	20%
Non-EU Europe or Rest of World end user	£667 / US\$1,334	£833 / US\$1,667
Online access	Back to 1967 https://qjgeh.lyellcollection.org/	
Schedule	February, May, August, November	
Online ISSN: 2041-4803, Print ISSN 1470-9236		

Geochemistry: Exploration, Environment, Analysis

Volume 20, 4 issues



	<i>Online only</i>	<i>Online + print</i>
UK end user	£329 + VAT	£411 + VAT
European Union end user	£372 + VAT	£465 + VAT
VAT rate**	20%	20%
Non-EU Europe or Rest of World end user	£372 / US\$743	£465 / US\$929
Online access	Back to 2001 https://geea.lyellcollection.org/	
Schedule	February, May, August, November	
Online ISSN: 2041-4943, Print ISSN 1467-7873		

Petroleum Geoscience

The international journal of geoenergy and applied earth science

Volume 26, 4 issues



	<i>Online only</i>	<i>Online + print</i>
UK end user	£545 + VAT	£681 + VAT
European Union end user	£545 + VAT	£681 + VAT
VAT rate**	20%	20%
Non-EU Europe or Rest of World end user	£545 / US\$1,090	£681 / US\$1,362
Online access	Back to 1995 https://pg.lyellcollection.org/	
Schedule	February, May, August, November	
Online ISSN: 2041-496X, Print ISSN 1354-0793		

GEEA is co-published by GSL & AAG.

The AAG newsletter *Explore* is not included with a GEEA subscription, email: explorenewsletter@gmail.com

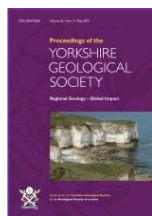
Petroleum Geoscience is co-published by GSL and EAGE.

The 2020 publication schedule is subject to change – e.g. scheduled publication month or some issues may be combined and published as a double issue.

Subscription rates are for single site access and apply to the geographic location of the end user. Please contact one of the regional agents listed on page 8 if you require a multi-site or global access license.

Proceedings of the Yorkshire Geological Society

Volume 63, parts 1 & 2 (2020)

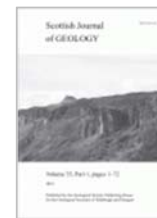


	<i>Online only</i>	<i>Online + print</i>
UK end user	£248 + VAT	£310 + VAT
European Union end user	£248 + VAT	£310 + VAT
VAT rate**	20%	20%
Non-EU Europe or Rest of World end user	£248 / US\$496	£310 / US\$620
Online access	Back to 1839 https://pygs.lyellcollection.org/	
Schedule	June & December	
Online ISSN: 2041-496X, Print ISSN 1354-0793		

Published on behalf of the Yorkshire Geological Society

Scottish Journal of Geology

Volume 56, 2 issues



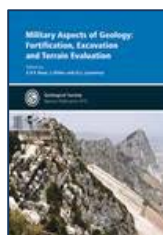
	<i>Online only</i>	<i>Online + print</i>
UK end user	£306 + VAT	£382 + VAT
European Union end user	£306 + VAT	£382 + VAT
VAT rate**	20%	20%
Non-EU Europe or Rest of World end user	£306 / US\$611	£382 / US\$764
Online access	Back to 1965 https://sjg.lyellcollection.org/	
Schedule	May & November	
Online ISSN: 2041-4951, Print ISSN 0036-9276		

Published on behalf of the Edinburgh and Glasgow Geological Societies

The 2020 publication schedule is subject to change – e.g. scheduled publication month or some issues may be combined and published as a double issue.

**Geological Society of London
Special Publications ‡**

2020 subscription



	<i>Online only</i>	<i>Online + print</i>
UK end user	£2,932 + VAT	£3,665 + VAT
European Union end user	£3,057 + VAT	£3,821 + VAT
VAT rate**	20%	20%
Non-EU Europe or Rest of World end user	£3,057 / US\$6,113	£3,821 / US\$7,641
Online access	Back to 1964 (480+ volumes) https://sp.lyellcollection.org/	
Quantity per year	Varies (13 in 2016; 21 in 2017; 18 in 2018; 14 in 2019)	
Online ISSN: 2041-4927, Print ISSN 0305-8719		

Geoscientist

Volume 30, 11 parts



	<i>Print rate</i>
UK delivery address	£172
European or Rest of World delivery address	£197 / US\$395
VAT rate**	0%
Publication schedule	Monthly, February to December
Format	Print
Print ISSN	0961-5628

Online First?

Online First is a feature offered through the Geological Society's electronic content platform, the Lyell Collection. It enables typeset articles to appear online before the final volume or issue is complete.

This feature is available for all journals on the Lyell Collection site and Geological Society of London *Special Publications*. All *Online First* articles are in their final PDF format apart from pagination, i.e. they have been accepted for publication, copyedited, typeset, proofed and corrected.



<https://blog.geolsoc.org.uk/2018/10/15/2018-earth-science-week-photography-competition-winners-revealed/>

Accepted Manuscripts

Accepted Manuscripts for Lyell Collection content are posted online within 2 weeks of acceptance to facilitate early access to research and citation for authors and researchers. Digital article identifiers are published for Accepted Manuscripts and registered with CrossRef allowing permanent resolution to the final Version of Record when it is published.

This content is labelled “**Accepted Manuscript**”

Access entitlements for current institutional subscribers

Lyell Collection Complete[†] subscribers can view the full text of all *Online First* articles and accepted manuscripts in the Lyell Collection.

Special Publications[‡] subscribers can view the full text of all Special Publication *Online First* articles and accepted manuscripts. <https://sp.lyellcollection.org/online-first>

Subscribers to individual journals can view the full text of *Online First* articles and accepted manuscripts in the relevant journal.

Perpetual access is only available to *Online First* articles or accepted manuscripts published in a completed volume or issue within the subscribed-to calendar year.

Online First articles and accepted manuscripts are also available using pay-per-view. Please see www.geolsoc.org.uk/ppv for details of short-term access options.

More information

www.geolsoc.org.uk/OnlineFirst



With the Lyell Collection module on Geofacets, the Geological Society of London and Elsevier team up to deliver cutting-edge science for oil and gas exploration.

More information: www.geolsoc.org.uk/Geofacets

Geological Society of London *Special Publications* - Online Archive

Special Publications are renowned for their high quality of science and production. Each volume focuses on a specific theme and represents a balanced, state-of-the-art treatment of the subject matter.

Purchase Special Publication archives of volumes 1 to 450 outright for a one-off fee allowing perpetual access.

Download a list of the Special Publication titles in the various archives from www.geolsoc.org.uk/lcaccess##SParchive
 MARC records are available from www.geolsoc.org.uk/MARCrecords

All Special Publication volumes are available online on payment of an annual subscription fee (for the Special Publications‡ alone, or as part of Lyell Collection Complete†).

The 450 volumes are available in five separate archives:

	SP Volumes	Number of articles	Number of pages	UK end users	European Union end users	Europe and Rest of World end users
SP Archive 1	1 - 100	2,500	41,000	£5,856 + VAT	£5,856 + VAT	£5,856 / US\$11,713
SP Archive 2	101 - 200	2,000	36,000	£5,856 + VAT	£5,856 + VAT	£5,856 / US\$11,713
SP Archive 3	201 - 300	2,000	45,000	£5,856 + VAT	£5,856 + VAT	£5,856 / US\$11,713
SP Archive 4	301 - 400	1,750	35,000	£5,856 + VAT	£5,856 + VAT	£5,856 / US\$11,713
SP Archive 401-450	401 - 450	836	17,230	£2,928 + VAT	£2,928 + VAT	£2,928 / US\$5,856

Volumes 1 to 400 are available as 300 or 400 volume sets:

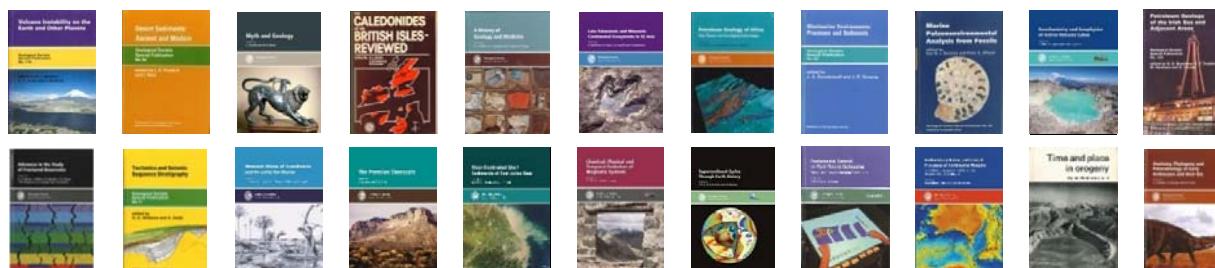
	SP Volumes	Number of articles	Number of pages	UK end users	European Union end users	Europe and Rest of World end users
SP archive 300	1 - 300	6,500	122,000	£14,641 + VAT	£14,641 + VAT	£14,641 / US\$29,282
SP archive 400	1 - 400	8,250	157,000	£18,302 + VAT	£18,302 + VAT	£18,302 / US\$36,604

The archives are hosted on the Geological Society's Lyell Collection, and there is no annual maintenance charge. Content is preserved in CLOCKSS.

URL: <https://sp.lyellcollection.org/content/by/volume>

These Archive rates are for single site access and apply to the geographic location of the end user.

Please contact one of the regional agents listed on page 8 if you require a multi-site or global access license.



Journal of the Geological Society - Online Archive

Journal of the Geological Society (JGS) publishes topical, high-quality recent research across the full range of Earth Sciences. Papers are interdisciplinary in nature and emphasize the development of an understanding of fundamental geological processes. The journal includes broad interest articles that refer to regional studies, but which extend beyond their geographical context.

The JGS Archive (1845-2007) includes over 17,000 articles and comprises over 150 years of geoscience research, including historically important content from many eminent scientists. Access the very earliest geological research from the greats such as Darwin, Murchison and Buckland to modern cutting edge research from an international field of authors.

The *Quarterly Journal of the Geological Society* (1845 to 1970) was re-named the *Journal of the Geological Society* in 1971.

All JGS volumes are available online on payment of an annual subscription fee (for Journal of the Geological Society alone, or as part of Lyell Collection Complete).



Image: © Wayne Brittle

JGS 1845 to 2007 content is available as one archive purchase or in three individual archives:

	Years of content	UK end users	European Union end users	Europe and Rest of World end users
JGS Archive 1845-2007	1845 - 2007	£15,950 + VAT	£15,950 + VAT	£15,950 / US\$31,900
JGS Archive part 1: 100 Years of Geology	1845 - 1945	£5,500 + VAT	£5,500 + VAT	£5,500 / US\$11,000
JGS Archive part 2	1946 - 1986	£5,500 + VAT	£5,500 + VAT	£5,500 / US\$11,000
JGS Archive part 3	1987 - 2007	£8,250 + VAT	£8,250 + VAT	£8,250 / US\$16,500

The JGS archives are hosted on the Geological Society's Lyell Collection, and there is no annual maintenance charge. Content is preserved in CLOCKSS.

URL: <https://jgs.lyellcollection.org/content/by/year>


These Archive rates are for single site access and apply to the geographic location of the end user. Please contact one of the regional agents listed on page 8 if you require a multi-site or global access license.


For further Lyell Collection information visit www.geolsoc.org.uk/lcaccess
or www.geolsoc.org.uk/journals for individual journal information.

Subscriber help page and Frequently Asked Questions - www.geolsoc.org.uk/lyellsubsfaqs

To subscribe (to Lyell Collection Complete, individual journals or to the Special Publication Archives) or to request further information, multi-site license prices or a free trial, please contact:

UK and Scandinavia: Accucoms. Rob Turner, Tel: +44 (0)203 936 4282. Email: rob@accucoms.com
Rest of Europe: Accucoms. Tel: +31 88 4100 400. Email: geologicalsociety@accucoms.com
USA and Canada: Geological Society at PCG, Cambridge, MA, USA. Tel: +1 617 395 4028, geologicalsociety@pcgplus.com
South East Asia: Accucoms. Tammy Chang, Tel: +886 911 778 311, tammy@accucoms.com (Malaysia, Singapore, Philippines, Indonesia, Myanmar and Vietnam)
India: Accucoms, New Delhi. Tel: +91 11 45719347. Chandrima Roy, chandrima@accucoms.com and Yogesh Zope, yogesh@accucoms.com
Caribbean, Central and South America: DotLib. Tel: +55 (21) 3431-3430, info@dotlib.com
The People's Republic of China: Charlesworth China. Tel: 010 5869 6201, info@charlesworth.com.cn
All other regions: Geological Society Publishing House, Bath, UK. Tel: +44 (0)1225 44 50 46, subs@geolsoc.org.uk

Discount	No trade discount (0%).
Cancellations	Cancellations are not accepted after the subscription payment has been received and processed.
Payment terms	<p>The prices on this list are for single site access. Please contact the regional agent listed above if you require a multi-site or global access license.</p> <p>Payment with order.</p> <p>Subscriptions for UK & European Union end users must be paid in GBP. By cheque in GBP or US\$ - made payable to Geological Society. By Visa, MasterCard or American Express (debited in GBP). By Bank Transfer in GBP or US\$. Please see contact us for our bank account details.</p> <p>Payments for 2020 subscriptions must be made separately to payments for single issues, back issues, archive orders, book purchases, book proforma and book invoices. Credit notes cannot be used against subscription payments.</p> <p>Renewal notices for current subscribers will be issued in August/September 2019. Please email us quoting the renewal number if a modification or a product change is required (e.g. upgrade to Lyell Collection Complete or an amendment from online+print to online only option).</p> <p>Proforma (quotation) for new orders are sent on request.</p> <p><i>Please send orders, payments and remittance advice to:</i> Geological Society Publishing House Unit 7 Brassmill Enterprise Centre Brassmill Lane Bath, BA1 3JN, UK</p> <p>Email: subs@geolsoc.org.uk or sales@geolsoc.org.uk Fax: +44 (0)1225 44 28 36</p>
Tax charges (VAT, TVA, IVA, BTW, etc.)	<p>UK end user subscription payments must include VAT.</p> <p>European Union (excluding the UK): VAT registered end user institutions and companies are not currently subject to the UK VAT charge when their VAT registration number is included with the order and payment. Tax rates and details are correct as of 1 July 2019 and are subject to change.</p> <p>India: All local taxes VAT/SERVICE TAX are the responsibility of the recipient of the service and should be paid directly by the recipient to the Indian tax authorities.</p>
License agreement	<p>The Geological Society of London does not issue or require the agreement of a formal license for institutional access to Lyell Collection content. The GSL adheres to the SERU guidelines, as published on the NISO SERU website. More information: www.geolsoc.org.uk/SERU Payment of subscription or archive fees (direct or via an agent) implies acceptance of SERU.</p> <p>Multi-site and global licenses may be issued. Text and Data Mining requests to licence should be emailed to subs@geolsoc.org.uk</p> 

<ul style="list-style-type: none"> • Online access activation and administration • Help pages • Usage reports • MARC/KBART records • Supplementary material • Discovery services • CASA • CLOCKSS • HighWire Administrator Toolbox 	<p>Please provide the full address and contact email of the end user so a unique subscriber id can be issued.</p> <p>Activation: please follow the instructions provided here: www.geolsoc.org.uk/lyellsubsfqs#activate Access does not have to be re-activated for each subscription year. The information provided during access activation will be used by us to provide you with updates during your subscription.</p> <p>Help pages: www.lyellcollection.org/content/help www.geolsoc.org.uk/lyellsubsfqs</p> <p>Contact the site host: www.lyellcollection.org/feedback</p> <p>Usage reports. Direct links to usage reports are listed on the FAQ page: www.geolsoc.org.uk/lyellsubsfqs#UsageReports</p> <p>MARC record metadata for all book content on the Lyell Collection is provided to WorldShare Collection Manager at OCLC. An excel file listing all the current book titles in the Lyell Collection, plus MARC and KBART records, can be downloaded from www.geolsoc.org.uk/lcaccess</p> <p>Supplementary material can be found within the GSL figshare portal at http://geolsoc.figshare.com</p> <p>Discovery services: Content is indexed in EBSCO Discovery, Primo and Summon.</p> <p>Campus Activated subscriber Access (CASA): All content published through HighWire's Intelligent Publishing Platform is compatible with Universal CASA - meaning researchers can access the content at anytime, anywhere, from any device and any source.</p> <p>We have partnered with CLOCKSS (Controlled Lots of Copies Keep Stuff Safe) to ensure that all the articles available on the Lyell Collection are stored safely and securely online. www.clockss.org</p> <p>The HighWire Administrator Toolbox can assist subscribers to manage their subscriptions. Please note: we cannot access toolbox login details – please contact HighWire direct. This includes: links to usage reports, IP updates, Shibboleth profiles and configuration for OpenURL. http://highwire.org/librarians/</p> 
<p>Perpetual access for online subscriptions</p>	<p>When a subscription lapses the online access is graced for 90 days and then cancelled. Perpetual access is available on request by contacting subs@geolsoc.org.uk. A subscriber for 2016 to 2019 who does not renew for 2020 can receive perpetual access to the relevant content published in final volume form during 2016 to 2019. Please note that “<i>Online First</i>” articles and Accepted Manuscripts are not included in this right to perpetual access.</p> <p>A pre-2008 subscription does not entitle a user to access Lyell hosted past content. For subscriptions up to and including 2007 the print copy was the copy of record and electronic access was a free add-on. Once a subscription lapsed, electronic access was switched off.</p>
<p>Subscriptions with a print component</p>	<p>Postage is included in price for print subscriptions. <i>Airmail delivery is not available.</i></p> <p>If the subscription payment is processed after printed issues have already been mailed then the back issue(s) will be sent by surface mail (please allow up to 3 months for overseas delivery). Please note that when subscription payments are received and processed after March 2020 the availability of back issues is not guaranteed.</p> <p>Missing print issues must be claimed within 3 months of the end of the subscription year (by 31st March 2020 for 2019 issues). Claimed issues are sent by surface mail.</p> <p>For book volumes please check the Society bookshop for availability before making a claim: www.geolsoc.org.uk/New-publications Please quote the publisher reference or the subscriber id (listed on subscription receipts and renewals) in all correspondence.</p> <p>Please email subs@geolsoc.org.uk for price and availability of print issues published in 2019 and earlier.</p>
<p>GeoScienceWorld</p>	<p>There is some overlap between the journal content on Lyell Collection and GeoScienceWorld (GSW). However, no book content is available on GeoScienceWorld by subscription.</p> <p>Content only available via the Lyell Collection:</p> <ul style="list-style-type: none"> • The deep Journal of the Geological Society archival material (<i>QJGS</i>, 1845 to 1970), • volumes prior to 2000 for Proceedings of the Yorkshire Geological Society and Scottish Journal of Geology • The historic transactions: Transactions of the Geological Society of London, Transactions of the Edinburgh Geological Society, Transactions of the Geological Society of Glasgow <p>Subscriber ids for Lyell Collection subscriptions (and IPs registered for Lyell Collection access) are not accepted for GeoScienceWorld content.</p>
<p>Journal of Micropalaeontology</p>	<p>The <i>Journal of Micropalaeontology</i> is published on behalf of The Micropalaeontological Society by Copernicus Publications. www.journal-of-micropalaeontology.net Previously published on their behalf by the Geological Society from 1994 to 2017. Content published from 1982 to 2017 (volumes 1 to 36) is available at http://jm.lyellcollection.org to current Lyell Collection Complete subscribers.</p>

Book series information

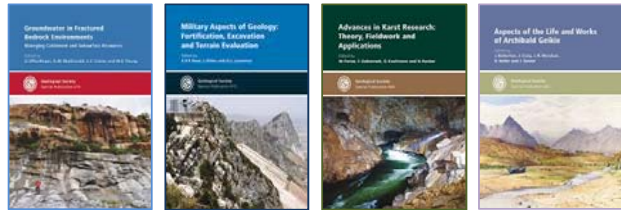


Cover image from SP450

Special Publications

Special Publications are renowned for their high quality of science and production. Each volume focuses on a specific theme and represents a balanced, state-of-the-art treatment of the subject matter. Articles from each volume are available *Online First* months before the hardcopy appears in print. The Society publishes 12 - 20 volumes each year.

<https://sp.lyellcollection.org/>



Engineering Geology Special Publications

This successful series is devoted to the wide range of engineering geology and geotechnical topics: each volume provides balanced coverage of its subject.

Volume 29 is scheduled for publication in 2020.

<https://egsp.lyellcollection.org/>



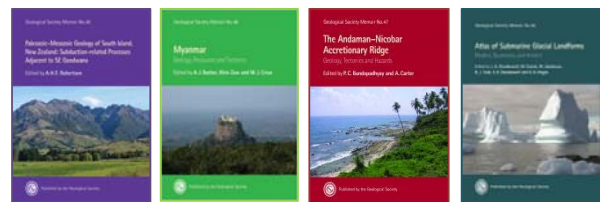
Online access only available with a Lyell Collection Complete subscription

Memoirs

Memoirs are definitive treatments of their subjects by acknowledged experts. They may be edited collections of papers, or can be written by a single group of authors.

Volume 50 is scheduled for publication in 2020.

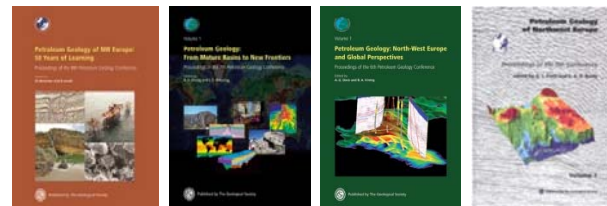
<https://mem.lyellcollection.org/>



Petroleum Geology Conference Series

The fully edited and peer-reviewed Proceedings of the 4th, 5th, 6th, 7th and 8th conferences in this prestigious series are hosted on the Lyell Collection.

<https://pgc.lyellcollection.org/>



Special Publications Archives

This extensive 450 volume archive is hosted on the Geological Society's Lyell Collection by HighWire, and can be purchased outright for a one-off fee allowing perpetual access with no annual maintenance charge.

450 volumes are available in five separate archives:

- Volumes 1 to 100
- Volumes 101 to 200
- Volumes 201 to 300
- Volumes 301 to 400
- Volumes 401 to 450 *New archive from 2020*

300 or 400 volumes are available in two sets:

- A 300 volume set, volumes 1-300
- A 400 volume set, Volumes 1-400

Please see page 6 for current rates.



Special Publication Annual Subscription

All Special Publication volumes are available online on payment of an annual subscription fee (for the Special Publications alone, or as part of Lyell Collection Complete). See page 2 and page 4 for rates and options.